

# *MOVING FORWARD*

# 2045

Long Range Transportation Plan

The graphic features the year '2045' in a large, dark blue, sans-serif font. A green diagonal line runs from the top left to the bottom right, passing through the '0' and '4'. To the right of the '5' are four dark blue square icons: a white silhouette of a person walking, a white silhouette of a wheelchair, a white silhouette of a car, and a white silhouette of a bus.

Calvert-St. Mary's Metropolitan Planning Organization

October 15, 2019

# Presentation Topics



**MPO  
Responsibilities**



**Transportation  
Planning Process**



**Demographics**



**Travel Trends**



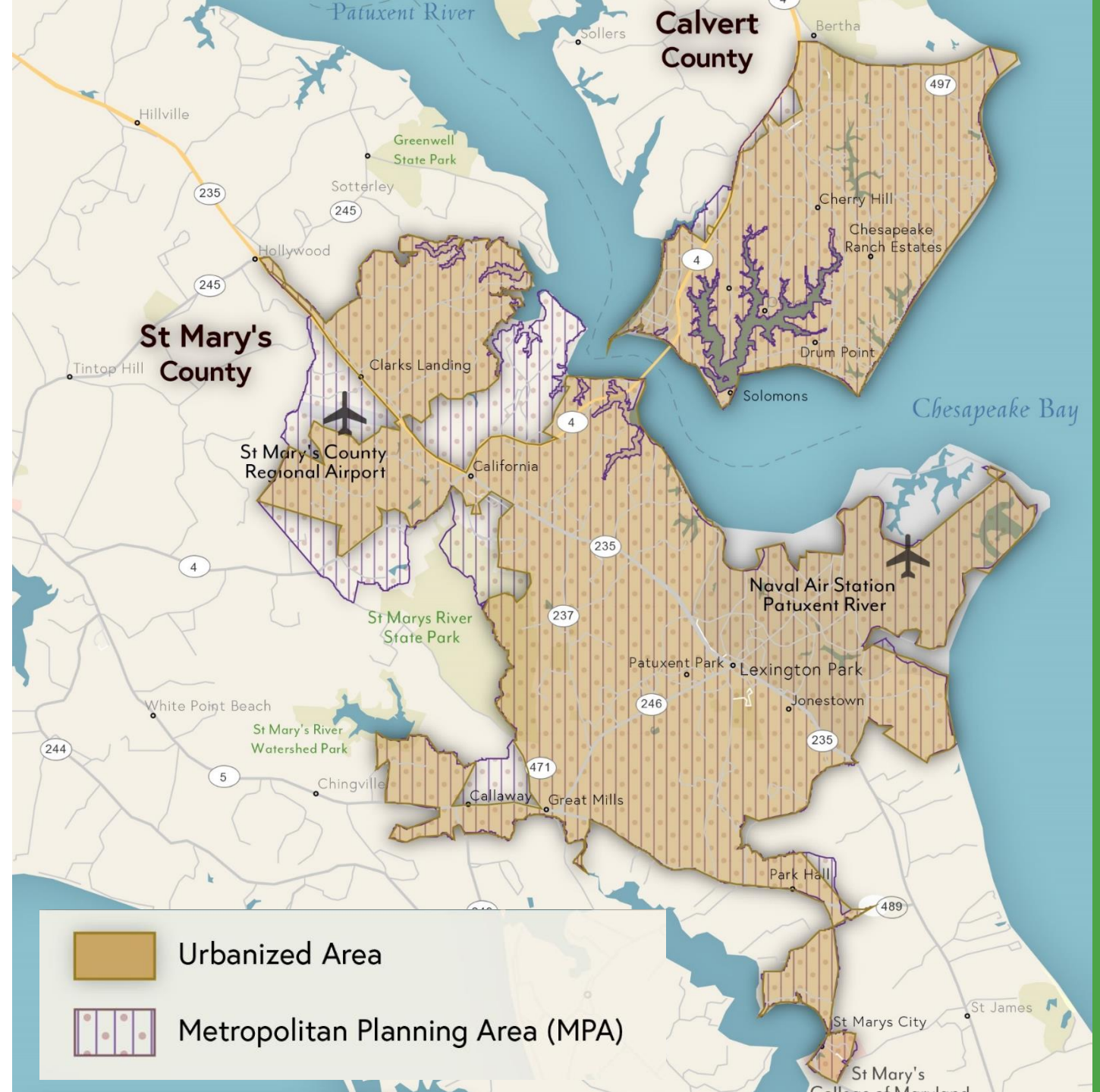
**Moving Forward  
2045**

A long, multi-span bridge stretches across a wide body of water under a twilight sky. The water is dark blue with gentle ripples. The bridge has several tall, dark piers supporting its deck. The sky is a mix of soft pinks, purples, and blues, with some light clouds. The overall mood is calm and serene.

# MPO Responsibilities

# What is an MPO?

- MPOs are responsible for regional transportation planning
- The census created the Lexington Park-California-Chesapeake Ranch Estates Urban Area in 2010
- The Calvert-St. Mary's MPO (C-SMMPO) was created in 2013



# MPO Responsibilities

- 1 Create the setting**  
Create and manage a fair and impartial setting for regional decision-making
- 2 Involve the public**  
Involve the public by actively seeking input on the plans and projects of the MPO
- 3 Prepare and maintain a Long-Range Transportation Plan**  
Develop and update an LRTP that improves mobility and access for people and goods, efficient system performance, and good quality of life
- 4 Create the Transportation Improvement Program**  
Develop a four-year plan of transportation improvements based on the LRTP
- 5 Create the Unified Planning Work Program**  
Develop a plan for the work that supports the regional transportation planning process including studies to define new projects and priorities

# MPO Responsibilities

## Long-Range Transportation Plan

- Vision for the region's transportation system
- Work with state and local agencies
- Must include public input
- Updated every four years
- Cover a period of at least twenty years

## Transportation Improvement Program

- Prioritizes transportation projects
- Must make progress on the goals of the LRTP
- Four-year plan
- Must include financial information and the responsible agency

## Unified Planning Work Program

- Includes studies and tasks that MPO staff perform
- Must identify funding source, schedule, and responsible agency

# MPO Structure



## MPO Board

Commissioner from St.  
Mary's County

Commissioner from Calvert  
County

MDOT Secretary or  
designee

Meets as needed to make  
decisions on matters of  
regional importance



## MPO Staff

One full-time staff member

St. Mary's County Planning  
Staff

Calvert County Planning  
Staff

Technical support from  
MDOT, SHA, and MTA

Complete the LRTP, TIP, and  
UPWP and conduct  
planning studies



## Technical Advisory Committee

Professionals, such as urban  
planners and engineers,  
from relevant agencies

Review and recommend  
revisions to the planning  
process to inform the  
decision-making process



# Transportation Planning Process



# Project Process



**Planning Study** –  
early concept



**LRTP** – project  
included in fiscally  
constrained plan



**Maryland CTP** –  
project funded by  
the State



**TIP** – project added  
to program



**Planning** – concept  
design and consider  
impacts



**Engineering** –  
design a project to  
be built



**Right of Way** – acquire needed  
land and prepare for construction

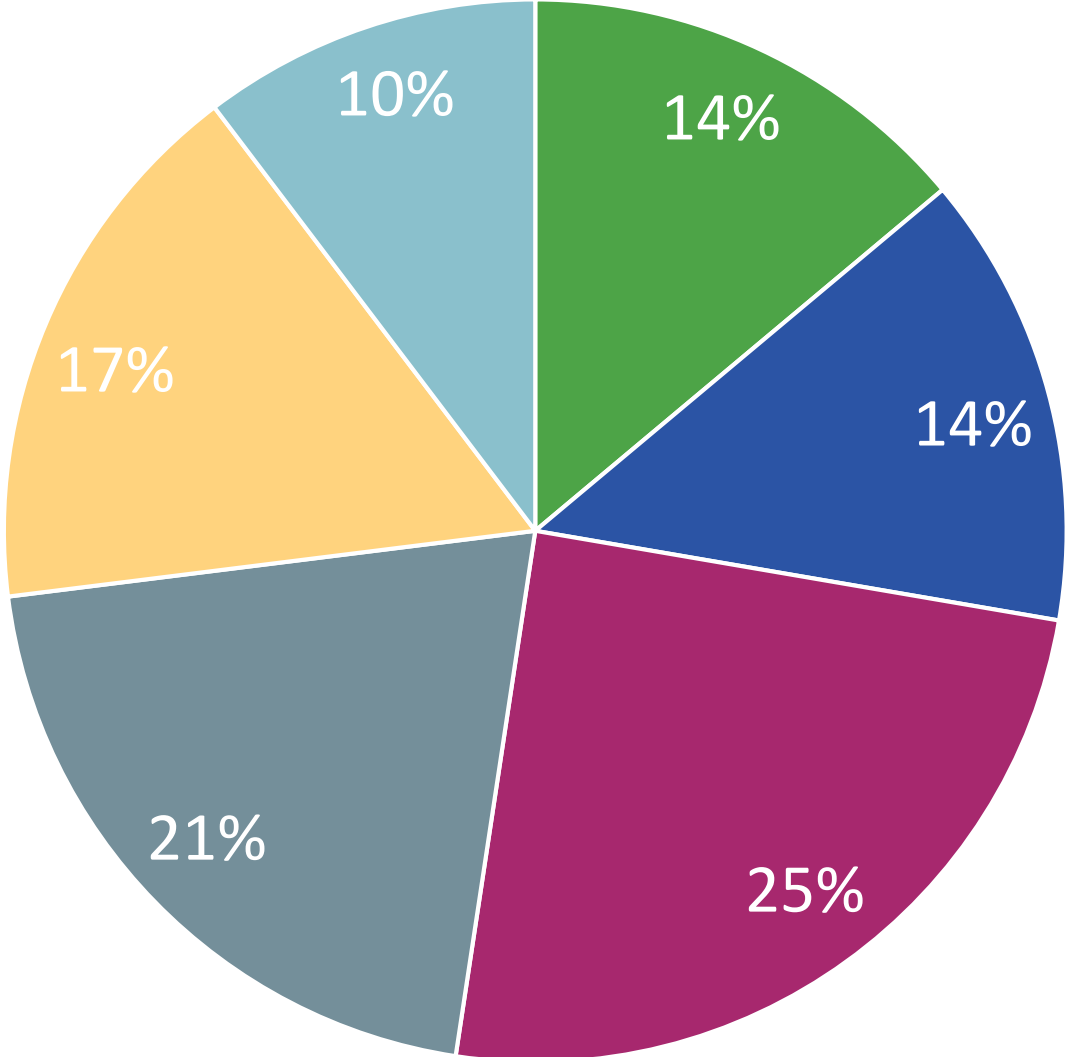


**Construction** – build the project!



# Demographics

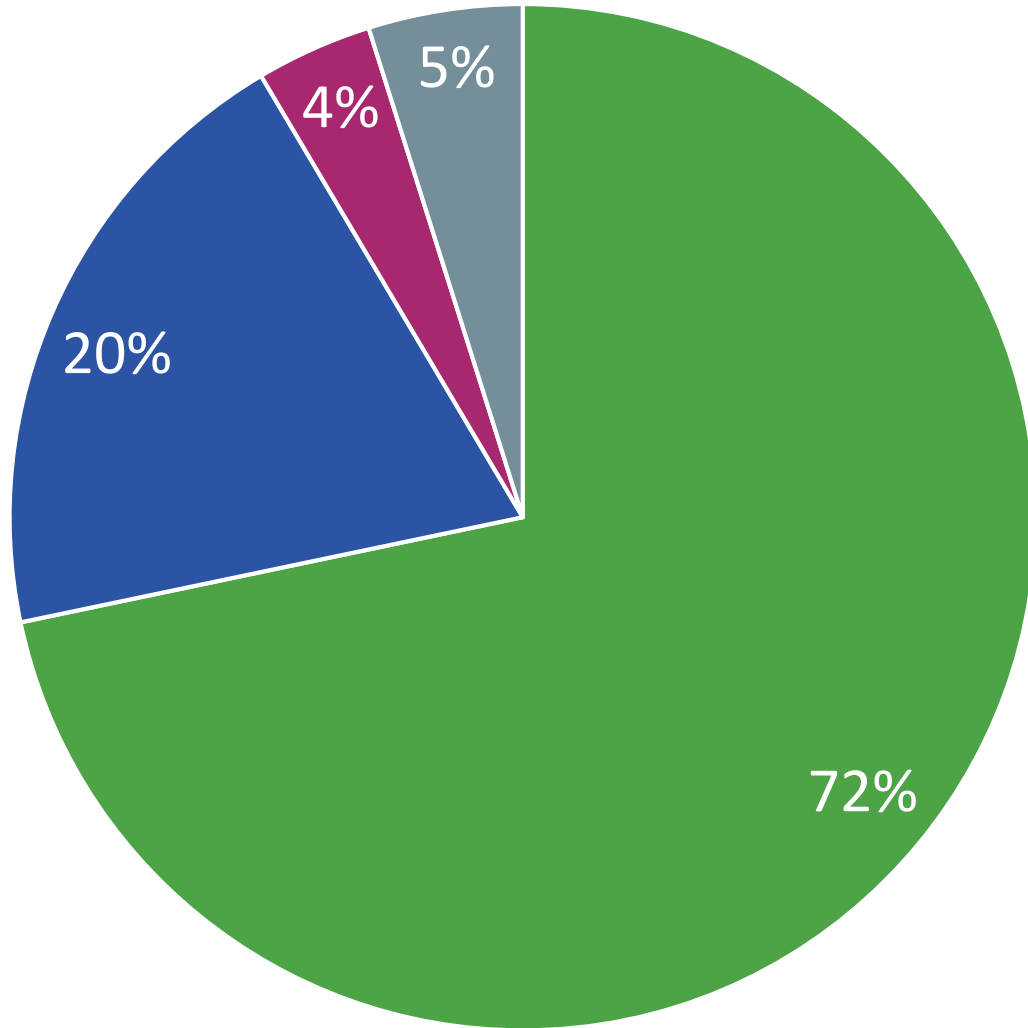
# Age in the Urban Area



Median Age: 33.5

- 0 - 9
- 10 - 19
- 20 - 34
- 35 - 49
- 50 - 64
- 65+

# Race in the Urban Area

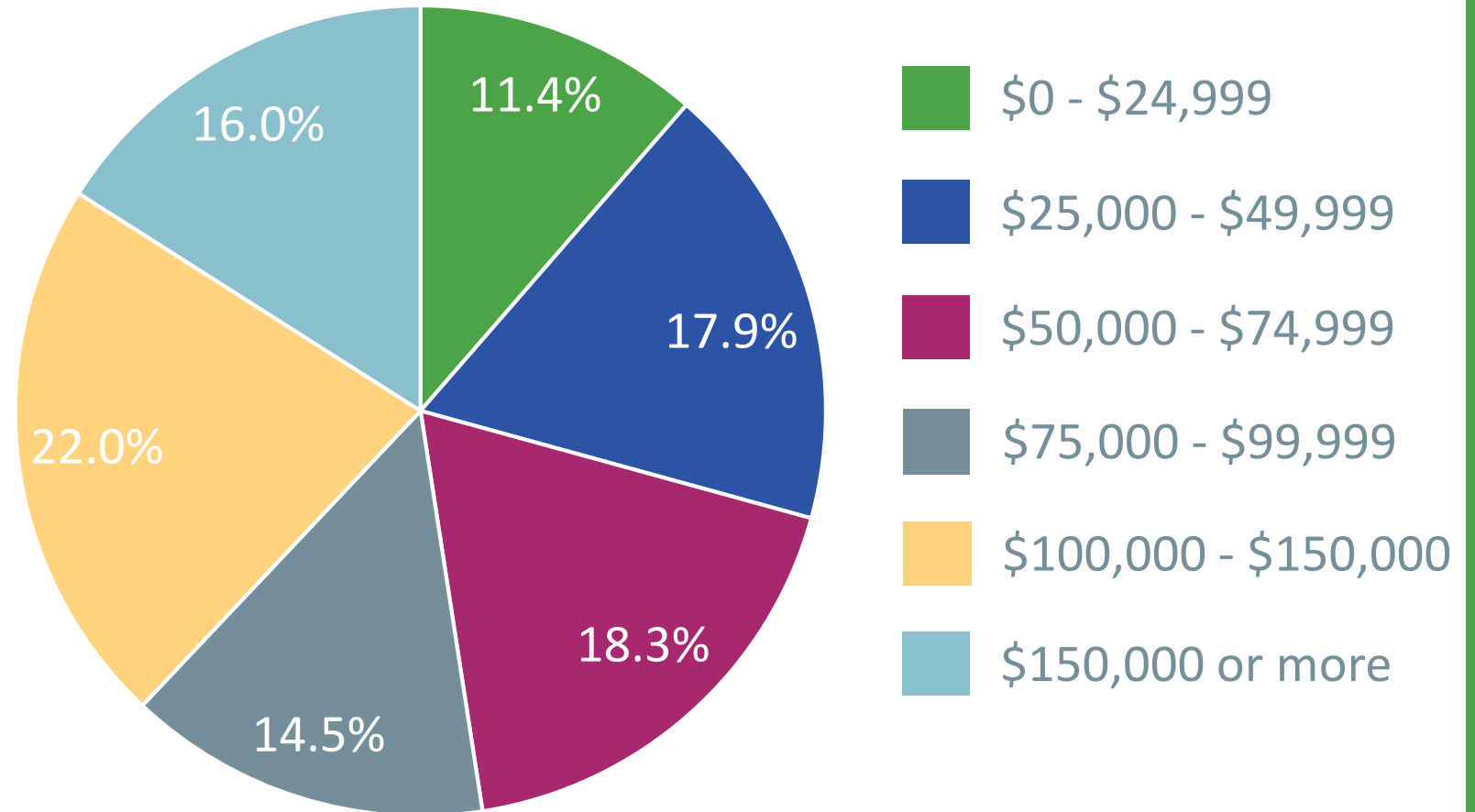


- White
- Black or African American
- Asian
- Other

Hispanic Population: 5.9%

# Income in the Urban Area

- The median household income is \$78,448
- Poverty rate: 8.6%
- Unemployment rate: 6.4%



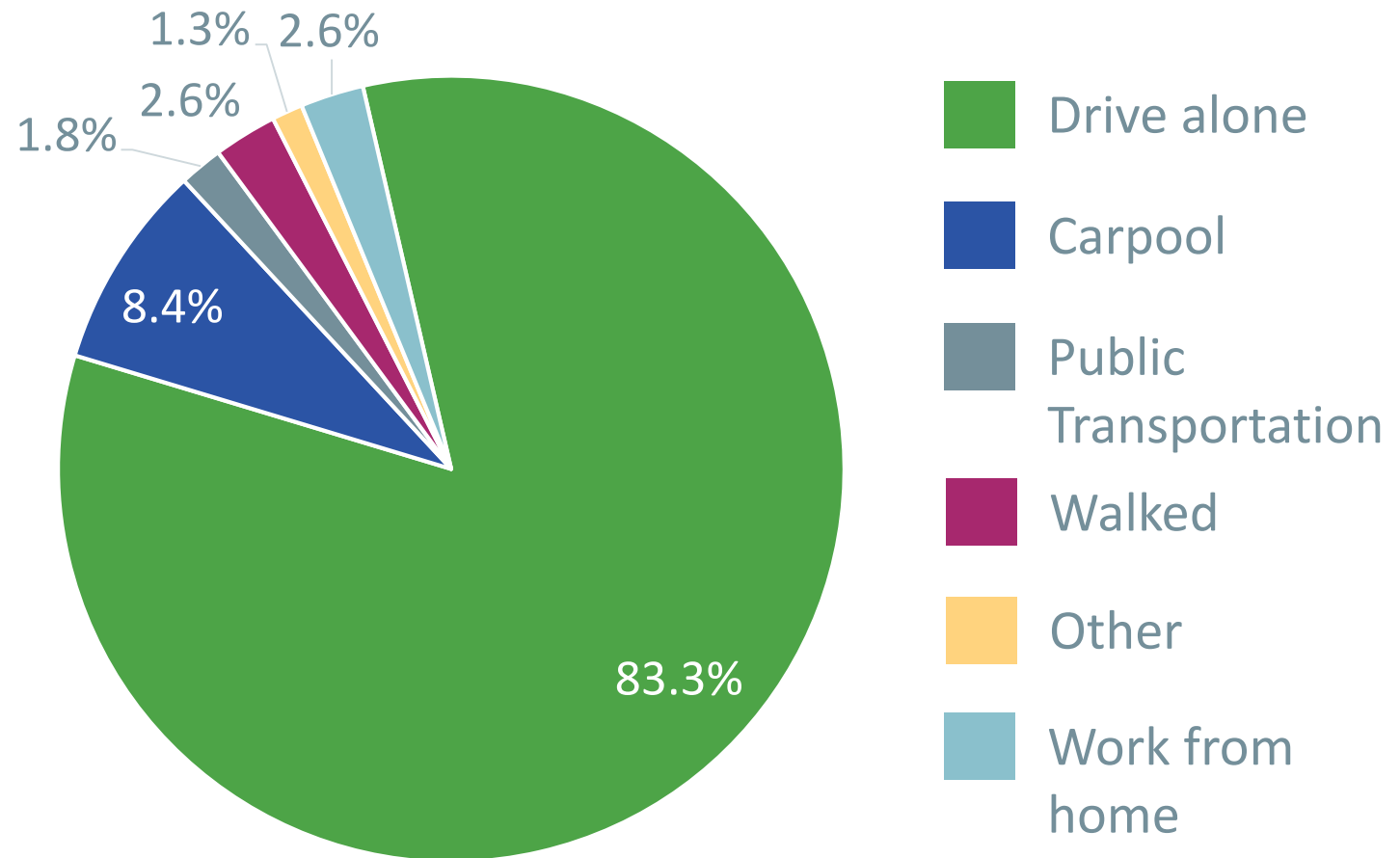
# Households

- 22,500 housing units
- Median household size is 2.61
- About 2/3 of people own their homes and 1/3 rent
- There are about 8-10% fewer married couple households in the UA

Household Type	Calvert County	St. Mary's County	Urban Area
Married-couple family	58.6%	55.0%	47.2%
Other family	16.9%	15.4%	18.0%
Lives alone	18.6%	24.1%	26.6%
Non-family cohabitants	5.9%	5.5%	8.2%

# Employment

- Private vs. Public employment
  - 63.4% private firms
  - 32.4% government
  - 4.2% self-employed
- Place of Work
  - 70% work in county of residence
  - 24% elsewhere in MD
  - 6% outside of MD



A blurred background image of a residential street. The scene shows a paved road with yellow double lines, a sidewalk, and houses with green lawns and trees. The image is intentionally out of focus to serve as a backdrop for the text.

# Travel Trends

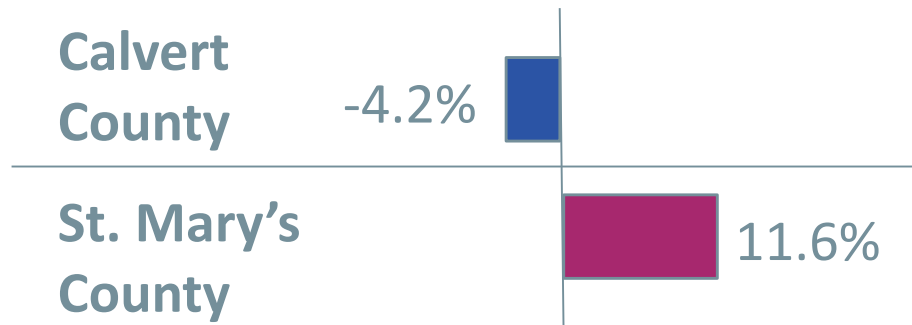


# Travel Trends

## Vehicle Miles Traveled (VMT)

- Vehicle Miles Traveled (VMT) means all the miles traveled by vehicle in an area over a time period

**From 2010 to 2018, VMT has...**



## Average Annual Daily Traffic

- How many vehicles are expected to drive on the road in any day of the year
- MD 2-4 from Coaster Rd/Mill Bridge Rd to Lore Rd AADT has increased by 11% from 2010

# Existing Areas of Congestion

## Calvert County

### Heavy Congestion

- MD 4 before Thomas Johnson Bridge

### Moderate Congestion

- MD 760/Rousby Hall Rd north in the AM peak and south in the PM peak

## St. Mary's County

### Heavy Congestion

- MD 4 from Thomas Johnson Bridge to MD 5 in both directions
- MD 5 from MD 245/Hollywood Rd to MD 489/Park Hall Rd in both directions
- MD 246/Great Mills Rd to/away from NAS PAX

# Moving Forward 2045



# Goals of Moving Forward 2045

Manage the existing transportation system



Enhance access and mobility



Support economic vitality



Provide connected, multimodal transportation system



Improve safety and security



Conserve the environment



# Timeline





Questions?

# Give your input on transportation priorities in the region!

Survey link: [c-smmpoplan.metroquest.com](https://c-smmpoplan.metroquest.com)

or scan QR code on flyer

## Join us for a chance to review the final draft plan!

**January 16, 2020**

Opportunities from  
2pm to 7:45pm

Lexington Park Public Library

21677 FDR Boulevard  
Meeting Room A/B  
Lexington Park, MD 20653